

Clothes That Move: Why, and How?

A guided tour by Lea Albaugh

Frank-Ratchye STUDIO for Creative Inquiry
December 2, 2014

I'm Lea.

(pronounce: “”)

@doridoidea

(**Doridoidea**, commonly known as **dorid nudibranchs** (and previously known as the taxon Cryptobranchia), are a **taxonomic superfamily** of medium to large, shell-less sea **slugs**, **marine gastropod mollusks** in the clade **Doridacea**, included in the clade **Nudibranchia**.)

Actuated Wearables: Why, and How?

A guided tour by Lea Albaugh

Frank-Ratchye STUDIO for Creative Inquiry
December 2, 2014



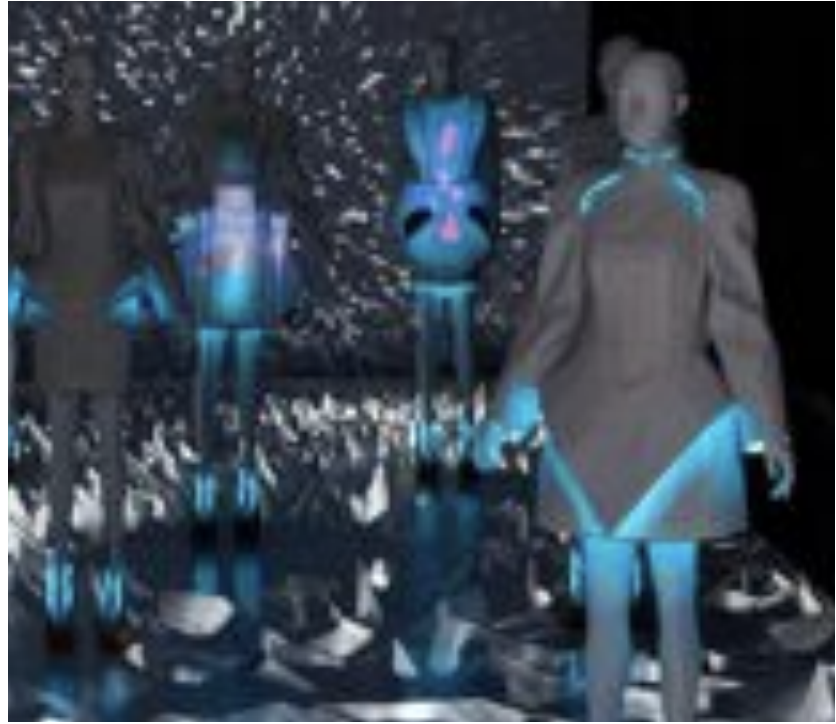
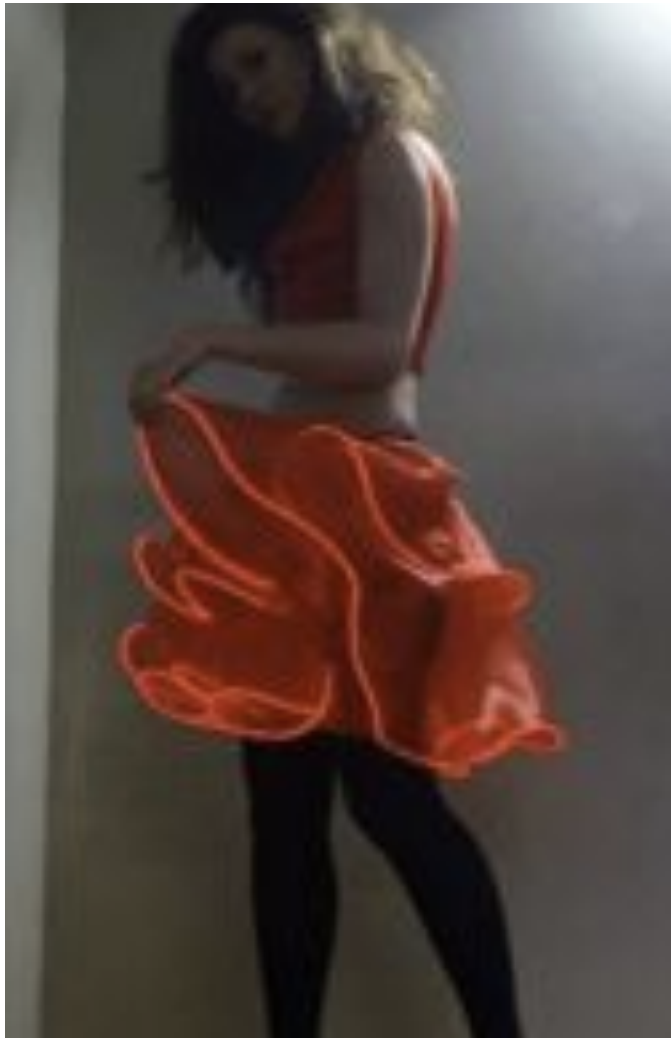
WEARABLES



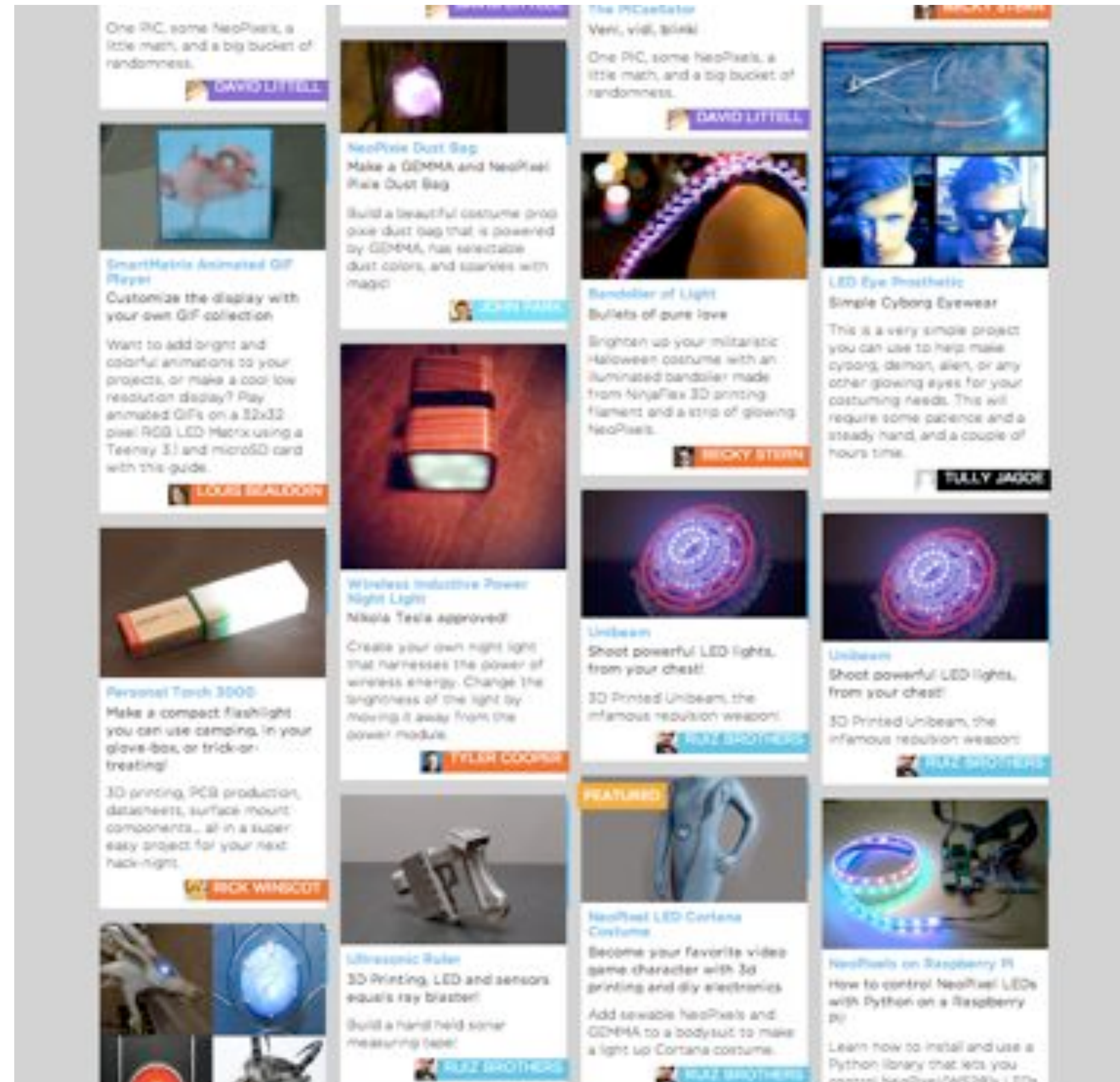
CLOTHES



TEXTILES



E-TEXTILES



LEDs

(light-emitting diodes)



CLOTHES

My work.





Design decisions.

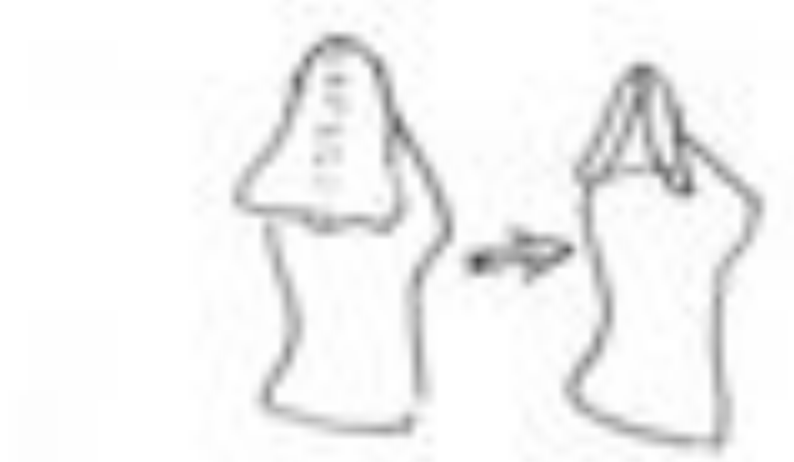






what would cindy sherman do





Support
between coat
panels / around body
etc. - manipulation
superficially
light coat part



- Agreements
affected by other:
- major size (big)
 - width
 - length
 - fabric (long, durability etc)
 - texture (color, texture)
 - carrying equipment (bags)
 - great protection (dark, high collar, long coat)
 - identification (light, contrast)





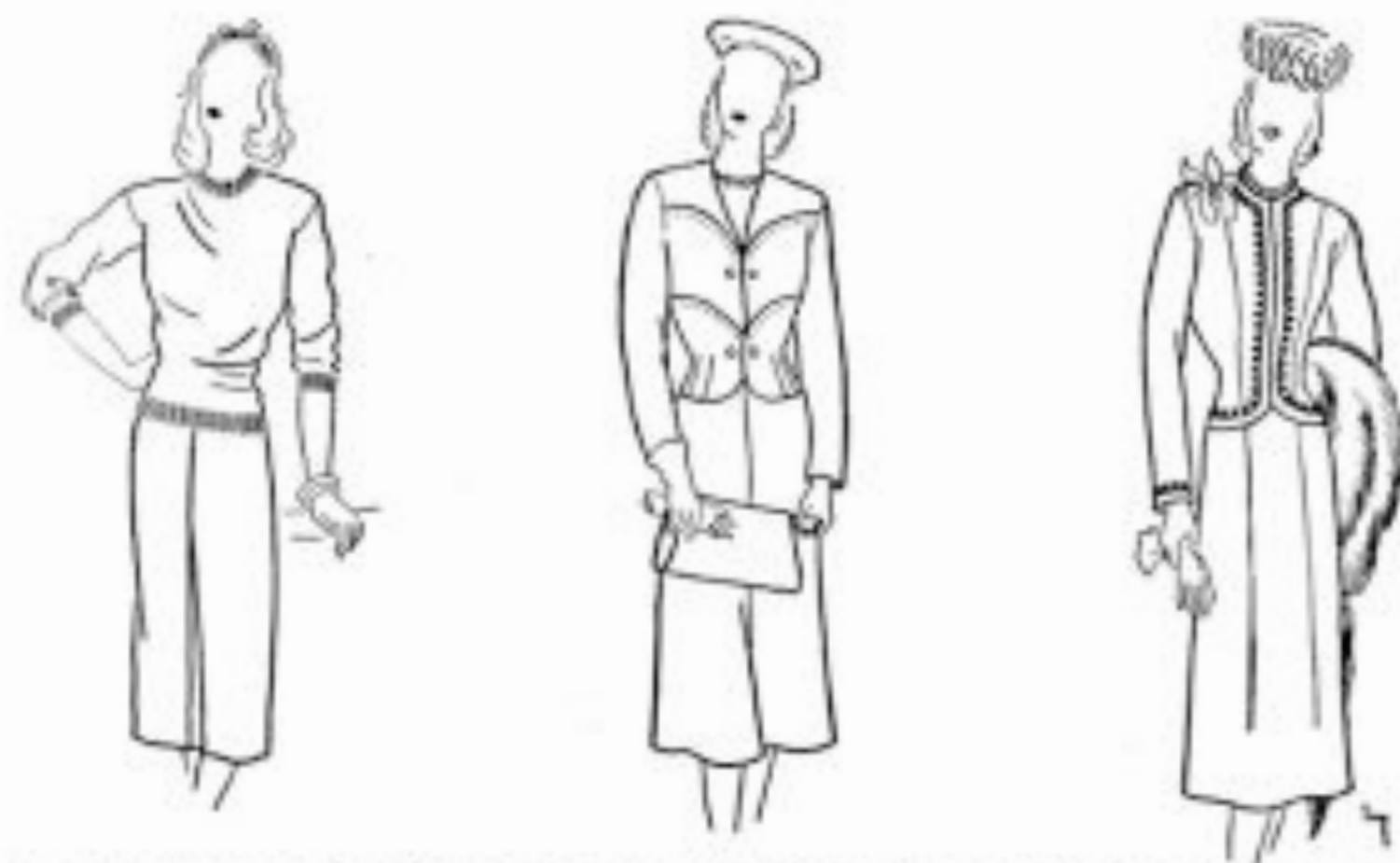
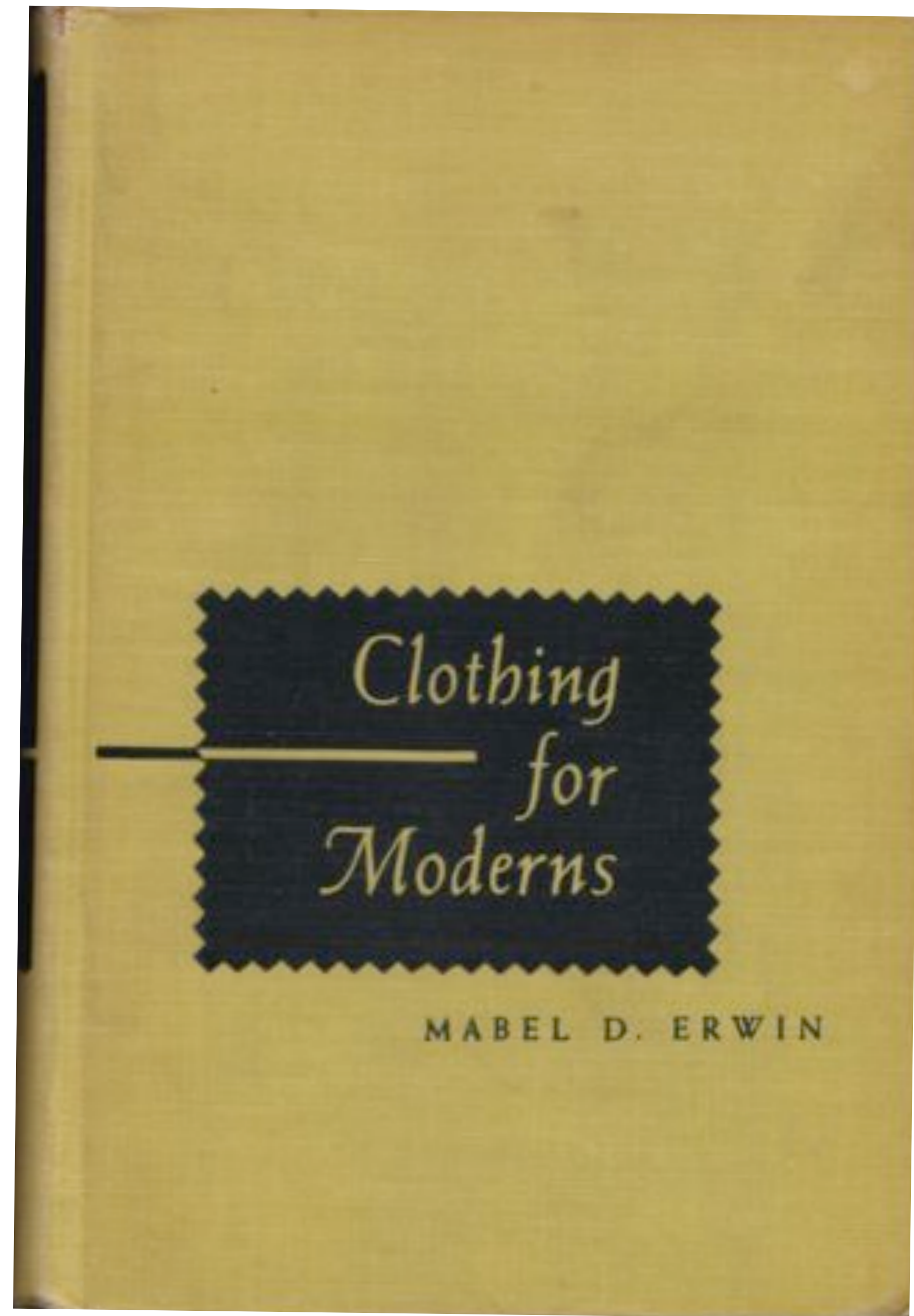


FIG. 17. The center costume is most satisfactory for an interview with a prospective employer. Obviously the figure at the left is careless and unbusinesslike. The girl at the right is overdressed for business.



FIG. 21. The plump or stocky girl appears more graceful and youthful in medium up-turned hats, vertical lines near center of figure, diagonal lines, plain sleeves, flared fullness in skirt; neat, narrow (slightly lowered but not dipping) waistline; short jackets, soft fullness over bust, A and B. She should avoid tiny hats, very wide belts, strap sandals, any emphasis at hip line, C and D.





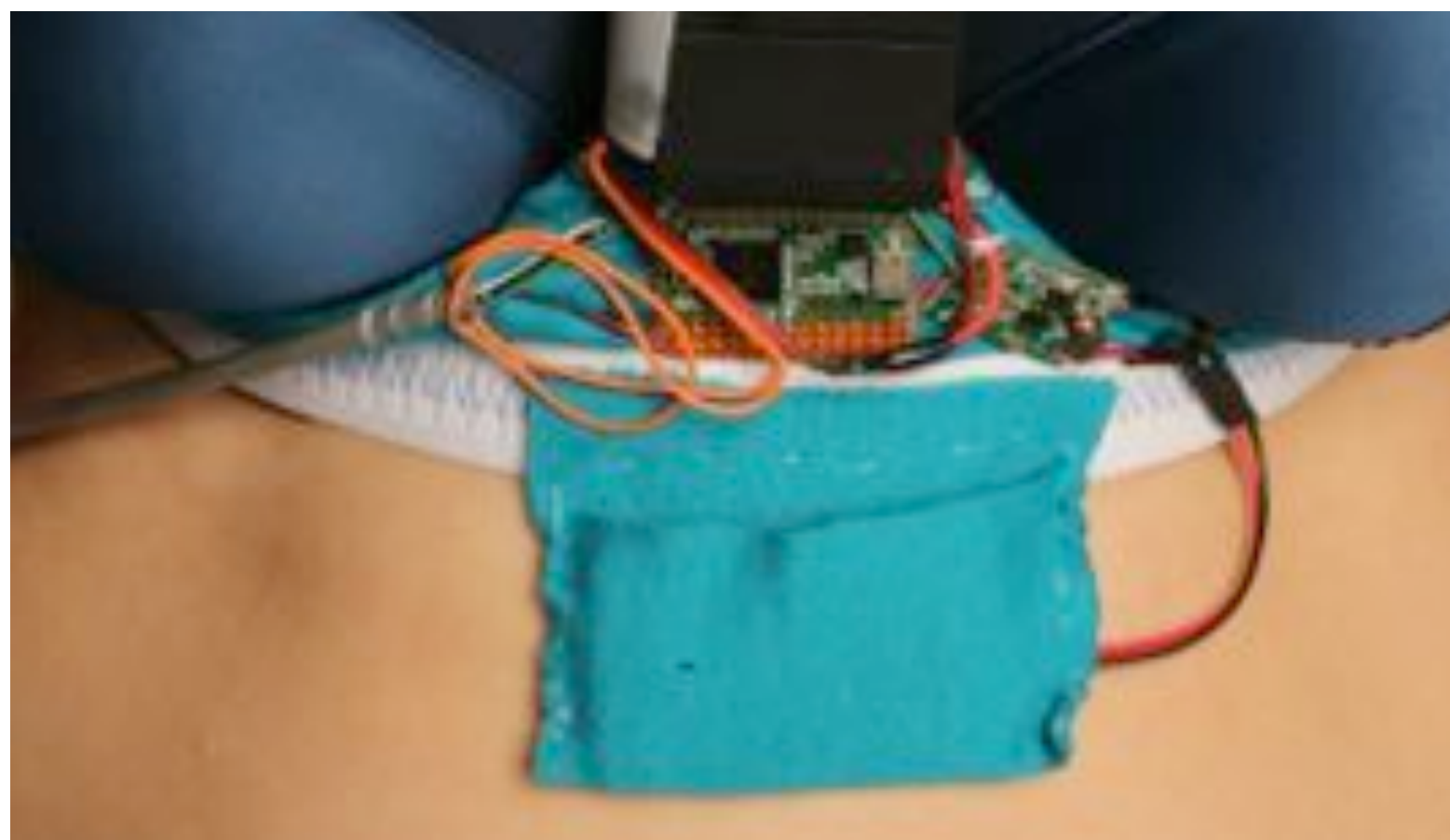








batteries





How?

Hand-knotted motor
from kobakant.at/DIY



It is difficult to build things for
squishy meat bodies.

(read this book:



)

- Build on shoulders.
- Use manipulable structures.
- Be okay with unpredictability.
- Make video art.

- **Build on shoulders.**
- Use manipulable structures.
- Be okay with unpredictability.
- Make video art.

Prosthetic Technologies of Being: Monarch & Nautilus from the Social Body Lab at OCAD University



Taiknam Hat
by Ricardo O’Nascimento & Ebru Kurbak



- Build on shoulders.
- **Use manipulable structures.**
- Be okay with unpredictability.
- Make video art.

miura-ori



Diana Eng, Fairytale Fashion



Veasyble



THE ART OF
**Manipulating
Fabric**



Colette Wolff

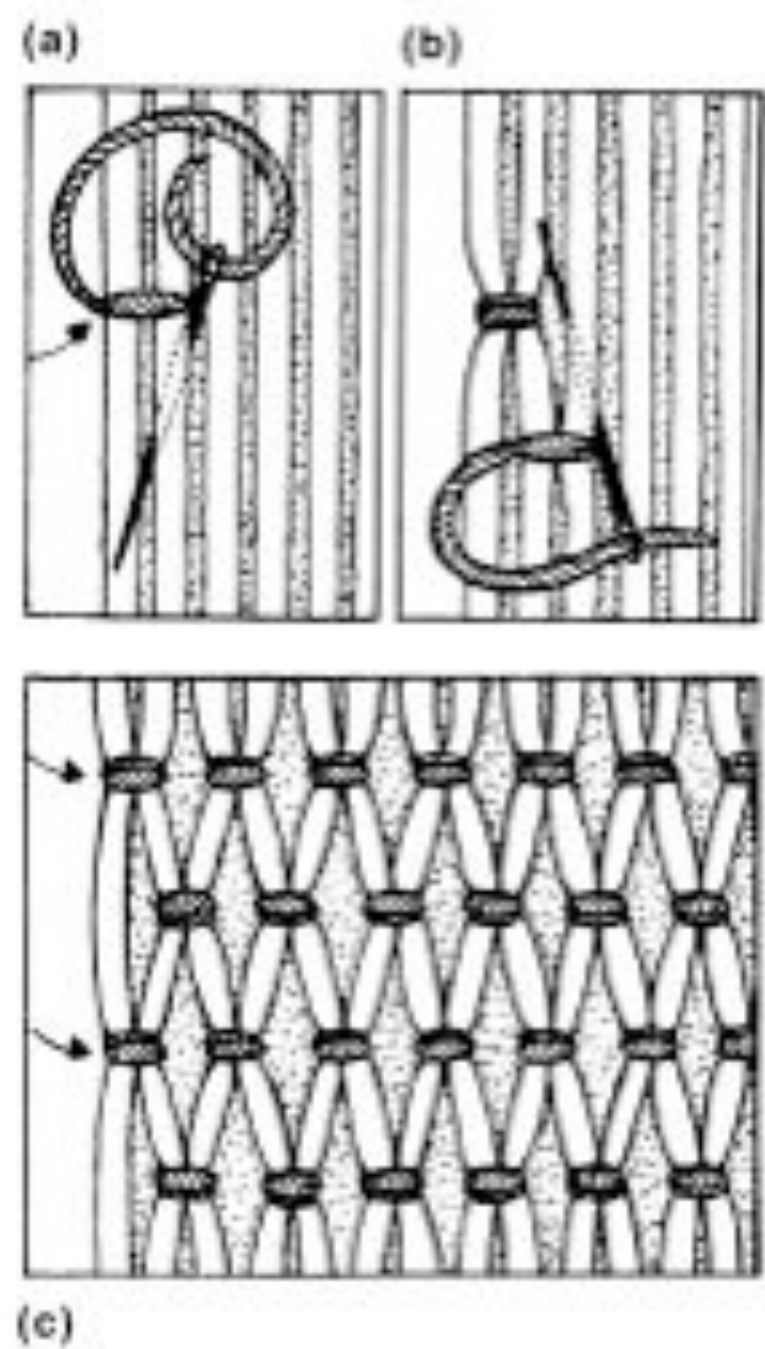


Fig. 7-8. (a) Moving down inside a tube. (b) Stitching two tubes together, and moving up (c) to create rows of honeycomb stitches.

smocking





Actuated smocking from kobakant.at/DIY





- Build on shoulders.
- Use manipulable structures.
- **Be okay with unpredictability.**
- Make video art.

Anouk Wipprecht, Smoke Dress VW



Anouk Wipprecht, Smoke Dress VW



see also:
Diller+Scofidio's Blur pavilion



Joo Youn Paek, Self-Sustainable Chair



Lucy McRae for Robyn's "Indestructible"

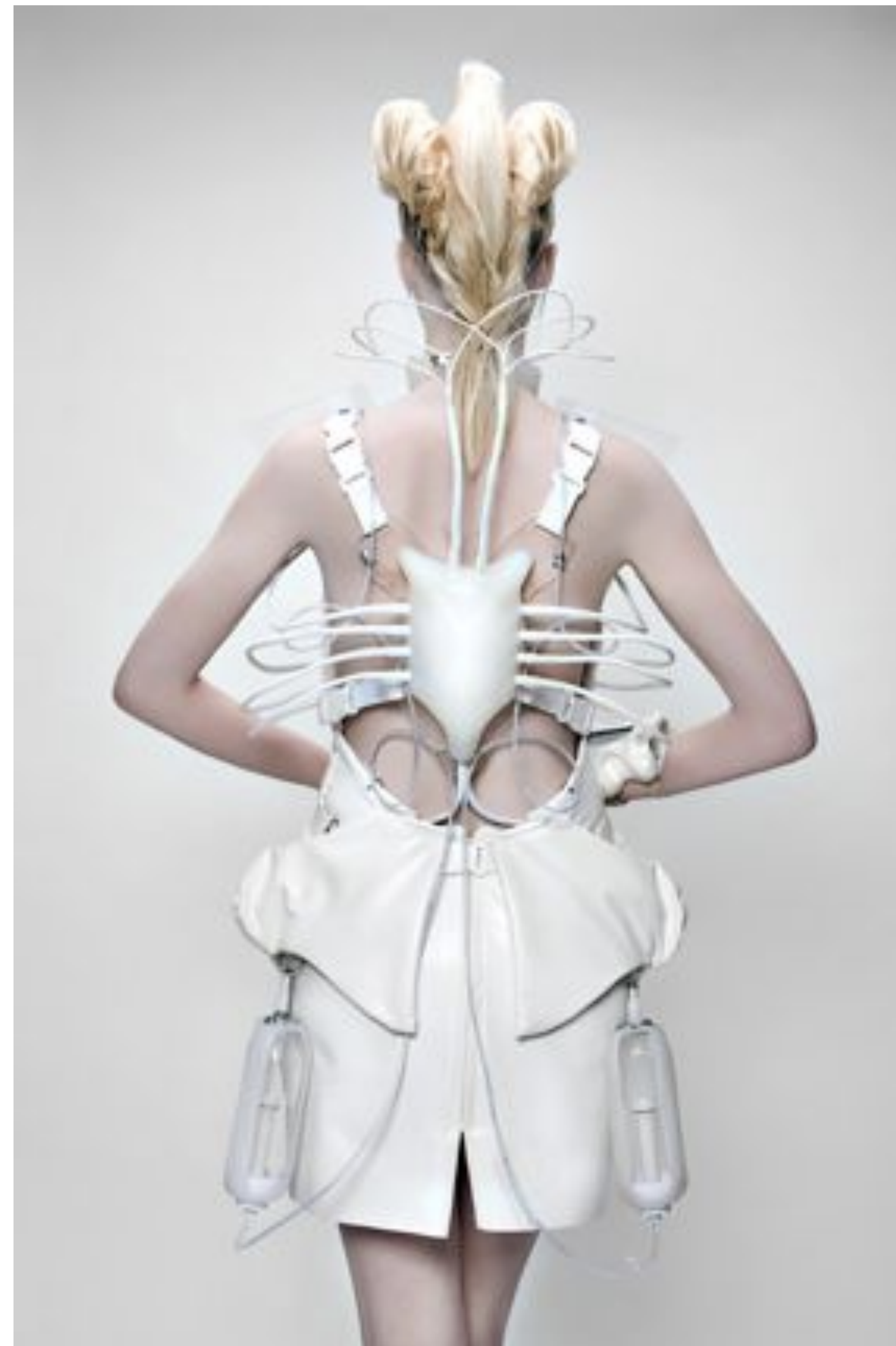


- Build on shoulders.
- Use manipulable structures.
- Be okay with unpredictability.
- **Make video art.**

Hussein Chalayan S/S 2007



Anouk Wipprecht, DareDroid 2.0



Local Androids, “Like Living Organisms”



“Age Gain Now Empathy System” (AGNES)



So, what are you going to build?

The Frank-Ratchye
STUDIO
for Creative Inquiry

